

Name: \_\_\_\_\_

## SIGN PATTERNS

Find the sign pattern for each function.

1.  $f(x) = (x-2)(x+3)(x-4)^2$

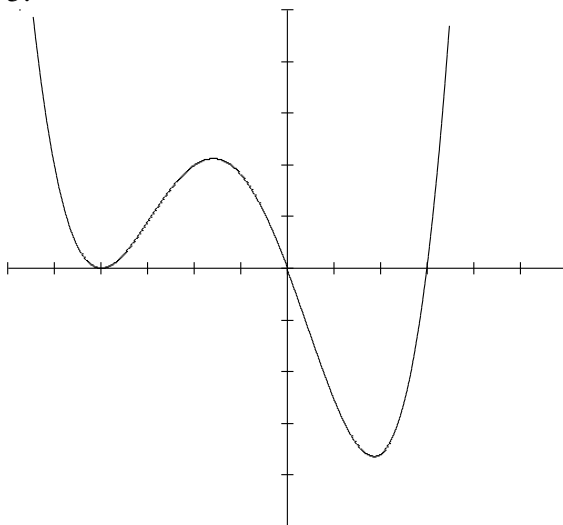
2.  $f(x) = \cos x$  over the interval  $\left[-\frac{\pi}{2}, 2\pi\right]$

3.  $f(x) = \frac{(x-1)(x+3)}{(x-2)(x+6)}$

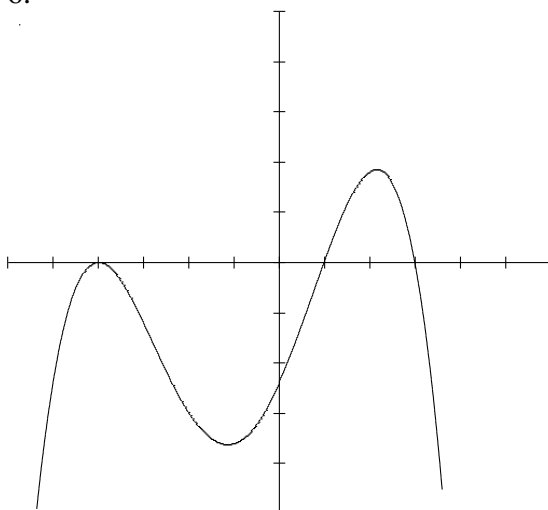
4.  $f(x) = -(x-3)(2x+1)(x-5)$

Find the sign pattern for each.

5.



6.



7.  $f(x) = \sin x$  over the interval  $[0, 2\pi]$